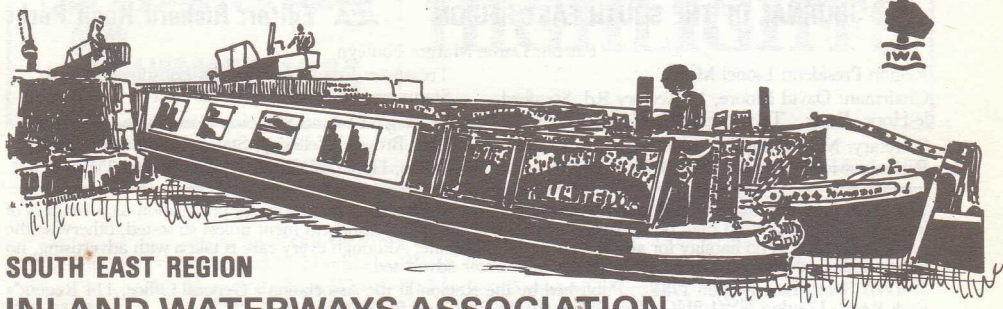


WINDLASS



**SOUTH EAST REGION
INLAND WATERWAYS ASSOCIATION**



Photo—R.H.P.

The stern-wheel narrowboat *Jethro Tull*—acquired by Mike Lewis, Pete Miller and Neil Thompson—a regular and colourful entrant at IWA rallies. Based on the River Wey the *Jethro Tull* is seen here on the Leeds and Liverpool.

February 1985

Number 173

windlass

JOURNAL OF THE SOUTH EAST REGION



Inland Waterways
Association

Editor: Richard Hugh Perks

Patron: Dame Margot Fonteyn

Region President: Lionel Munk
Chairman: David Moore, 12 Rectory Rd, Stanford-
le-Hope, Essex Tel: Stanford-le-Hope 677729
Secretary: Mike Stimpson, 109a High Street,
Rickmansworth, Herts. Tel: 0923-7-70425

Treasurer: Brian Freshney, 68 Lansdowne Road,
Stanmore, Middlesex HA7 2SA Tel: 01-954 4580
SE Region Inland Shipping Committee Chairman:
Alan Brown, Wellesley, Station Approach, Chorley
Wood, Herts WD3 5NE. Tel: 01-260 3516

The IWA may not agree with opinions expressed in this magazine but encourages publication as a matter of interest. Nothing printed may be construed as policy or an official announcement unless so stated, otherwise the Association accepts no liability for any matter in the magazine. Although every care is taken with advertising, no responsibility whatsoever can be accepted for any matter advertised.

© IWA South East Region 1984. Published by the Region at the Association's General Office, 114 Regent's Park Road, London NW1 8UG. Telephone: 01-586 2510 and 01-586 2556

Editorial

NATIONAL WATERWAYS SUMMER—1985 has been designated National Waterways Summer, (which probably means it's going to rain). Weather notwithstanding, it is our opportunity to demonstrate how waterways can be properly used; to raise money for waterway restoration schemes and to involve the public and members of other groups in the enjoyment of waterway recreation. The firm of Hardwick Press and Publicity has been retained to handle our national publicity. Cruise the Eastern Rother from Rye to the National Trust's Bodiam Castle; cruise through the Paddington Arm of the Grand Union and the Regent's Canal as the City of Westminster celebrates 400 years of its founding by a pageant on water; take part in the first ever National Trail Boat Rally which is being held on the Kennett and Avon Canal; visit the Aylesbury Arm of the Grand Union, the Sussex Arun, the River Wey during Guildford Festival and take the rare opportunity to cruise the lovely Chelmer and Blackwater Navigation.

The success of each of these events depends on as many IWA members as possible turning up to them; the future of our waterways depends on our ability to involve people in these events. What the public will see is a lot of people sensibly using their waterways, having fun on them in high summer. What they are seldom aware of is the fact that dedicated boaters cruise these navigations come rain or shine in all seasons. Some people frankly see us as a nuisance: we do not leave nylon line and lead shot on the banks where wildlife can be damaged; we do not pollute watercourses with raw sewage or leave a trail of plastic bottles, unwanted ironware or supermarket trolleys behind us and we do not frighten bird life. No categorical assurances by us will influence those who want the waterways for their own private 'club' use, and unfortunately their voices are loudly heard. We are boaters; we are also towpath walkers, ramblers, conservationists, anglers and wildlife enthusiasts. We represent all these interests.

National Waterways Summer is an opportunity for us to show what we do by our actions.

Windlass Advertising

Advertisements to be prepaid. Cheques to 'IWA', please to reach the Editor by deadline date.
Classified: £1.50 for 15 words. 8p per word thereafter. **Full page** £50, **½ page** £26, **¼ page** £17.50, **⅓ page** £13.50, **⅙ page** £7.
Distribution. Branch Secretaries can obtain additional copies of 'Windlass' from Dennis Cozens, 260 Boundary Road, Wood Green, N22. Telephone: 01-888 4646.

Next Issue: Windlass 174
Copy Deadline: 15 March 1985
Distribution Date: 3 May 1985

Copy to reach the Editor:
R. H. Perks, Weald Cottage, Eastling,
Faversham, Kent ME13 0BA. Tel: 079589-603

Please note that changes of addresses are to be reported to IWA Head Office, and not to the Editor of Windlass

Windlass



Inland Waterways Association

JOURNAL OF THE SOUTH EAST REGION

Editor: Richard Hugh Perks

Patron: Dame Margot Fonteyn

Region President: Lionel Munk
Chairman: David Moore, 12 Rectory Rd, Stanford-le-Hope, Essex Tel: Stanford-le-Hope 677729
Secretary: Mike Stimpson, 109a High Street, Rickmansworth, Herts. Tel: 0923-7-70425

Treasurer: Brian Freshney, 68 Lansdowne Road, Stanmore, Middlesex HA7 2SA Tel: 01-954 4580
SE Region Inland Shipping Committee Chairman: Alan Brown, Wellesley, Station Approach, Chorley Wood, Herts WD3 5NE. Tel: 01-260 3516

The IWA may not agree with opinions expressed in this magazine but encourages publication as a matters of interest. Nothing printed may be construed as policy or an official announcement unless so stated, otherwise the Association accepts no liability for any matter in the magazine. Although every care is taken with advertising, no responsibility whatsoever can be accepted for any matter advertised.

© IWA South East Region 1984. Published by the Region at the Association's General Office, 114 Regent's Park Road, London NW1 8UG. Telephone: 01-586 2510 and 01-586 2556

Editorial

NATIONAL WATERWAYS SUMMER—1985 has been designated National Waterways Summer, (which probably means it's going to rain). Weather notwithstanding, it is our opportunity to demonstrate how waterways can be properly used; to raise money for waterway restoration schemes and to involve the public and members of other groups in the enjoyment of waterway recreation. The firm of Hardwick Press and Publicity has been retained to handle our national publicity. Cruise the Eastern Rother from Rye to the National Trust's Bodiam Castle; cruise through the Paddington Arm of the Grand Union and the Regent's Canal as the City of Westminster celebrates 400 years of its founding by a pageant on water; take part in the first ever National Trail Boat Rally which is being held on the Kennett and Avon Canal; visit the Aylesbury Arm of the Grand Union, the Sussex Arun, the River Wey during Guildford Festival and take the rare opportunity to cruise the lovely Chelmer and Blackwater Navigation.

The success of each of these events depends on as many IWA members as possible turning up to them; the future of our waterways depends on our ability to involve people in these events. What the public will see is a lot of people sensibly using their waterways, having fun on them in high summer. What they are seldom aware of is the fact that dedicated boaters cruise these navigations come rain or shine in all seasons. Some people frankly see us as a nuisance: we do not leave nylon line and lead shot on the banks where wildlife can be damaged; we do not pollute watercourses with raw sewage or leave a trail of plastic bottles, unwanted ironware or supermarket trolleys behind us and we do not frighten bird life. No categorical assurances by us will influence those who want the waterways for their own private 'club' use, and unfortunately their voices are loudly heard. We are boaters; we are also towpath walkers, ramblers, conservationists, anglers and wildlife enthusiasts. We represent all these interests.

National Waterways Summer is an opportunity for us to show what we do by our actions.

Windlass Advertising

Advertisements to be prepaid. Cheques to 'IWA', please to reach the Editor by deadline date.
Classified: £1.50 for 15 words. 8p per word thereafter. **Full page** £50, **½ page** £26, **¼ page** £17.50, **⅓ page** £13.50, **⅙ page** £7.
Distribution. Branch Secretaries can obtain additional copies of 'Windlass' from Dennis Cozens, 260 Boundary Road, Wood Green, N22. Telephone: 01-888 4646.

Next Issue: Windlass 174
Copy Deadline: 15 March 1985
Distribution Date: 3 May 1985

Copy to reach the Editor:
R. H. Perks, Weald Cottage, Eastling,
Faversham, Kent ME13 0BA. Tel: 079589-603

Please note that changes of addresses are to be reported to IWA Head Office, and not to the Editor of Windlass

NATIONAL IWA WATERWAYS SUMMER 1985

WATERWAY HIGHLIGHTS

- 4-6 MAY** **CHELMSFORD**—Second Chelmsford Rally of Boats. Cruise from Heybridge Basin along the Chelmer and Blackwater Navigation. 'Smack Alley' will await you on arrival. If you've never heard of 'Smack Alley' before, by gosh, you'll know all about them by the time the rally is over. Lots of historic sailing ships promised at Heybridge Basin to see the convoy on its way.
Entries to Ken Wood, 39 Lindley Crescent, Romford, Essex.
- 4-5 MAY** **LITTLE VENICE**—Westminster 400, Pageant and Calvalcade through Westminster's Canals to celebrate the 400th Anniversary of the founding of the City of Westminster. 1984 was a fantastic pageant, this will be even larger with many sponsored boats. Entries to Malcolm Bates
- 12 MAY** **RIVER ARUN**—Small Boat Sponsored Cruise. Pulborough. Details from Gerry Skinner, Solent and Arun Branch.
- 25-27 MAY** **PEWSEY WHARF, KENNETT AND AVON CANAL**—The First Ever National Trail Boat Rally for small craft. Trade show, craft fair and stalls organised by the Pewsey Boat Club, K&A Canal Trust and the IWA Oxon and South Bucks Branch. Fifteen miles of beautiful canal to be cruised with no locks. Craft accepted up to 25 feet. Further details from John Clinch, 38 Howard Road, Newbury
- 1-2 JUNE** **GREENWICH**—Thames Barge Sailing Club's 'Open Day'. Come and visit examples of preserved traditional sailing ships on Greenwich Pier.
- 2 JUNE** **RIVER ROTHER CRUISE**—Kent and East Sussex Branch Third Annual Cruise from Rye to Bodiam on the Eastern Rother, with stalls and activities on the bankside in the grounds of Bodiam Castle by kind permission of the National Trust. It is also the opportunity to see the Kent and East Sussex Light Railway in operation at Tenterden; have a ride on a real steam train and support them in getting the rest of their line re-opened to Bodiam.
- 8-9 JUNE** **IWALK**—Walk your heart out for IWA. Lots of sponsored walks being held by various branches.
- 8-9 JUNE** **BASINGSTOKE CANAL**—Small boat Rally, Ash Lock. Trip boat *John Pinkerton* will be in attendance. Surrey and Hants Canal Society.
- 9 JUNE** **WEY AND ARUN CANAL SOCIETY**—Sponsored walk, Petworth.
- 16 JUNE** **RIVER ADUR**—Pleasure Cruise, 22 miles. Shoreham. Solent & Arun Branch.
- 6-9 JULY** **GUILDFORD FESTIVAL**—Guildford and Reading Branch Rally of Boats in association with the Festival.
- 13-14 JULY** **CHICHESTER BASIN**—Portsmouth and Arundel Canal Society. Beer Barrel Races on the Saturday from 2pm and for those who are still fit, a Canoe Fun-Day on the Sunday.
- 20-21 JULY** **ARUN WATERSIDE FAIR**—Adjacent to Castle Car Park, Arundel. Solent and Arun Branch.
- 10 AUGUST** **SWALE MATCH**—Faversham. Annual race for historic sail, power and steamships followed by a blockbuster of an evening with 'Smack Alley'. Entries to the Editor.
- 24-26 AUGUST** **MILTON KEYNES**—National Rally of Boats. Entries to Jim Wright, 8 The Martins Drive, Linslade, Leighton Buzzard, Bedfordshire.

BACKCHAT—by the Editor

Christmas Cartoon Competition—John Clinch's cartoon of the boater being breathalised by a policeman wheeling his bicycle through the water produced a number of captions. R. Pemberton of Welwyn Garden City suggested, 'The traditions of the drunken navigator must be maintained, Sir. So I'd be greatly obliged if you would strike a blow for posterity into this 'ere bag.'

Mrs Potter of Romford came up with 'Officer, your insinuations leave me breathless!.' The entry from R. P. Beauchamp of Colchester '...with no tiller, Officer?', was one of a number submitted by astute readers who noticed that the cartoon boat had no rudder and no tiller. On the same track Marcus Boudier suggests, 'I'm sorry I knocked you off, but I seem to have mislaid my tiller!' Some were a little bit cruel: 'Of course I'll hold your bag, Officer, while you blow into it.' From the redoubtable Billy Morris comes: 'If he nicks me, I will nick his (unlicenced) bike and leave him in the Putty.'

Attack seems to be the best form of defence and our winning entry comes again from Marcus Boudier (he of bicycling and other fame), Boater to Bobby 'How did you get your cycling licence?' A prize will be winging its way in your direction, Marcus, and we promise not to send a copy of the cartoon with your entry to the 'Police Gazette.'

NARROWBOAT PAINTING—Marylebone and Paddington Institute are running a one term course in narrowboat painting at the Sarah Siddons School, North Wharf Road, Paddington on Monday evening from 6.30 to 9.30 from 22 April to 1 July. Tutor is Tricia Parrott, a professional signwriter who lives and works on a narrowboat on the Regent's Canal. The course covers painting traditional designs, such as roses and castles, graining methods and simple lettering. Telephone Tricia on 01-724 3507 or the institute on 01-286 1900.

LIMEHOUSE ENQUIRY—Your friendly local public enquiry concluded in December 1983. As we write, one year later on, no news has been received about the possibility of a decision. 'What abhart ar' Cut, then, ye mandarins of White'all?'

Uncle Ron's Christmas Competition—No entrant gave the correct answer to either part 1 or 2. Answers: 1. Frank will not be able to pass through Gauging lock till Sunday. 2. Thames locks will be open from 0600-0755 and 1705-2105 but Gauging locks WILL NOT OPEN AT ALL that day. Explanation: BWB take High Water Brentford as being 55 minutes after High Water London Bridge and say that the following part of the Circular:

Brentford	Monday-Friday	} Open within the period 0700-1800 As Thames Tidal Lock
Gauging Lock	Excluding Bank Holidays	
No. 100	Saturday Sunday	
	Bank Holidays	

means that on Monday-Friday excluding Bank Holidays AND Saturday and Sunday AND Bank Holidays (yes, I know that means every day; why didn't they simply say so?) Gauging Lock will be open within the period 0700-1800 as Thames Tidal Lock, i.e. from 2 hours before high water to 2 hours after high water provided that the opening period calculated from this schedule is one hour or more.

It does NOT, BWB say, mean that Mondays-Fridays except Bank Holidays it is open from 0700-1800 and that on Saturdays, Sundays and Bank Holidays it is open the same times as Thames Tidal Lock! (you didn't think it meant that, did you?)

1. When Frank arrived at Hanwell flight on Friday it was already locked for the night and he got to the bottom at 0930 on Saturday as Gauging lock, 2 miles and 2 locks further on, was closing. Gauging lock did not open that afternoon as it is not open after 1800 therefore Frank could not pass through till Sunday.

2. The 'one hour or more' proviso means that Gauging lock, which would otherwise be open 0700-0755 and 1705-1800 (periods of less than one hour), does not open at all that day.

Since this competition was devised, and following representations from London Branch, Robin Garrett and Frances Read of BWB have greatly improved this situation by increasing Gauging lock opening times and making the circular easier to understand and less ambiguous. We are grateful to them for this.



SILVER SWORD AWARD—Congratulations to Dr. J. F. Hale of Harpenden on being awarded the IWA's Silver Sword Award in the Boat *Lutra Parva*.

WALKING FOR IWA—Dr. Michael Essex-Lopresti's walks along the Regent's Canal continue during 1985. Walks last approximately 2 hours and walkers donate £1 to IWA funds. All walks commence at Camden Town underground station. Walks to Islington at 2.30pm on Sunday 3 February; 7 April; 2 June; 4 August; 6 October and at 6.15pm on Tuesday 16 July. Walks to Paddington at 2.30pm on Sunday 3 March; 5 May; 7 July; 1 September; 3 November and at 6.15pm on Tuesday 18 June and 20 August.

RUNNING FOR IWA—Support Malcolm Bates and his two colleagues as they run for London Branch in the London Marathon on 21 April—'touchwood!'

THAMES WATER AUTHORITY—REGIONAL RECREATION AND CONSERVATION CONSULTATIVE COMMITTEE—Report by Tony Davis

This is an exceedingly long title, and as we shall doubtless be hearing more of it in future, we had better start using its abbreviation, the RRCCC. The Water Authorities have undergone yet another reorganisation with the passing of the Water Act 1983, and within each we now have this statutory committee, chaired by a member of the Board, with whom the Authority are obliged to consult on matters relating to recreation and conservation. Thames Water had such an unofficial Committee previously, I believe the only one of the water authorities to do so, but all are now obliged to set one up. The IWA has a seat on it, and I have been appointed to represent them for the next three years. We have already met twice and I have the feeling that it will prove useful. We are perhaps also fortunate to have a Chairman of our RRCCC, John Humphries, a past Chairman of our organisation.

I can be approached to raise matters either through Branch Committees, or individually if appropriate. There is one particular matter upon which I would like the direct assistance of members this coming year, which I will refer to later.

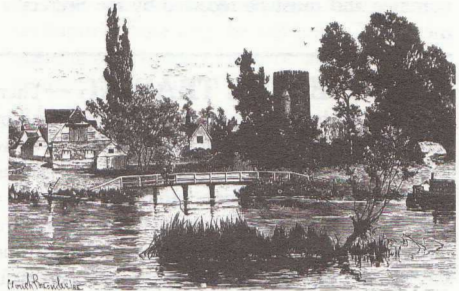
At the last meeting of the old TWA Liaison Committee in October 1983, we were informed that for 1984 there was to be a reduction in the Navigation staff of six, bringing it down to what the TWA themselves describe as a 'rock bottom' figure of 88 lock-keepers and reliefs, and 20 inspectors. We are aware of times this last summer where this has proved to be inadequate. Locks have been left unattended. Vandalism—particularly attacks on craft by youths jumping from bridges—has been endemic.

At the September meeting of the RRCCC we were presented with the astounding information that ten more navigation staff were to be made redundant in 1985. That is ten below the 'rock bottom' figure for 1984! Apparently TWA believe they can plug the gap by recruiting more 'summer reliefs' who will now undergo a fortnights training, and be put in uniform. However, some reduction in lock opening hours is also being mooted! The Thames Corporate Plan for 1984, para. A35, states that it is their intention 'to maintain the existing level of service'. Frankly we remain sceptical that this can be done with fewer staff and no cover for the usual holidays and emergencies; and certainly any reduction in opening hours will not come within para A35. We have been unable to get a change of policy on this matter, but only an assurance that all will be well.

At the end of the day, they are there to manage the navigation, and we must judge them on how well they achieve this. However, I would be obliged if members would keep me informed during the 1985 as to the standard of service they receive, and any instances of lack of it!

Two minor achievements have been the reopening of Chertsey Lock for three weeks over the New Year in the middle of their 4½ month closure, (the level of service in the Post Office ensured that this information missed the last *Windlass!*). Licence fees in 1985 will only be 5.5% up on 1984.

Tony Davis, 4 Mount Pleasant, Weybridge, Surrey.



The Thames at Goring—1885

NOTICE OF BRANCH AND REGION ANNUAL GENERAL MEETINGS

The AGMs will be held as follows.

REGIONAL AGM—8 MAY—Morris Radiator Sports Club, Frenchley Road, Oxford, 8pm.

CHELMSFORD AGM—14 MARCH—AUEW House, Primrose Hill, Chelmsford, 8pm.

OXFORD AGM—13 MARCH—Morris Radiators Sports Club, Frenchley Road, Oxford, 8pm.

KENT & E. SUSSEX AGM—26 MARCH—Hare and Hounds, Potter's Corner, Ashford, 8pm.

HERTFORDSHIRE AGM—19 MARCH—Hatfield CC, Welwyn Garden City, 8pm.

LONDON AGM—21 MARCH—University College, Gower Street, London, 7.30pm.

SOLENT & ARUN AGM—8 MARCH—Fernleigh Centre, Chichester, 7.30pm.

GUILDFORD & READING AGM—18 MARCH—British Telecom S & S.C., Leapale Lane, Guildford, 8pm.

AGENDA

- | | |
|----------------------------|---|
| 1. Apologies for absence. | 7. Adoption of Accounts. |
| 2. Minutes of the last AGM | 8. Report of Sub-Committee Chairmen
(if appropriate) |
| 3. Matters arising. | 9. Election of Committee Members. |
| 4. Chairman's Report. | 10. Appointment of Auditor. |
| 5. Secretary's Report. | 11. Any other business. |
| 6. Treasurer's Report. | |

Nominations for Committee Members should be in writing, signed by proposer, seconder and the nominee and must be received by the Secretary at least 14 days before the date of the appropriate meeting.

CONTINENTAL TRADING—There are canal boats and there are canal boats, as K&ES Branch member Annette Woods found out when she took up the offer made by Alan and Heather Mitchell to any branch members who wanted to visit the Dutch waterways with them. The Mitchells operate a 120 foot canal barge trading on the Dutch and Belgian canals and estuaries and Annette soon found herself signed on as crew. She proved to be such a good hand that when Heather (herself a master mariner) was taken ill before Christmas, Annette was flown back to Holland to resume shipboard duties. The Mitchells, who operate Quay Lane Wharf at Faversham, are UK agents for the very successful Pedro cruisers, and are owner of the Continental type coaster *Anton Held*. Visitors the Quay Lane Wharf would be well advised to pack a toothbrush and seaboots, first.

WENDOVER ARM—The Manpower Services Commission clearance scheme is continuing. It is hoped that part of the Arm can be re-watered but at present a report from BWB is awaited on whether they intend to re-water or merely renew the existing water pipes.

NORTH CIRCULAR ROAD AQUEDUCT—Proposed Closure—It had been intended to close the aqueduct for various, protracted sessions over a period of two years. However, thanks to the efforts of Ron Bingham and David Wood and protestations made by them it has been agreed that the aqueduct will only be closed for a single three week period.

NATIONAL RALLY NEWS—This year Milton Keynes. Moorings here are linear ones, so book early—unless you want to find you are berthed for the weekend $\frac{3}{4}$ mile inside the Blisworth Tunnel. The Hawkesbury Rally exceeded all expectations and has produced a record profit for IWA. The 1986 National Rally is to be held at Brentford.

KEEP LIVE THEATRE AFLOAT—Mike Lucas and Sarah Lucas write to tell us that Mikron Theatre will be kept afloat and they are determined to continue touring after the loss of the Art Council Grant. They have started an appeal fund to which they hope individuals, local authorities and regional arts council will subscribe. The Trent and Mersey Canal Society has agreed to sponsor a Mikron performance during their 1985 tour. It's a good idea—any branch or society willing to do the same would be helping to keep theatre alive on the 'cut'.

Letters to the Editor

'Shipwrights'
241 Benfleet Road
Benfleet, Essex

Dear Sir,

As many will have seen from the November *Windlass*, the Chelmsford Branch are holding a Rally of Boats on 4/5 May, 1985 at Kings Head Meadow, Chelmsford.

The Saturday evening has been reserved for IWA members and their guests; it will consist of a barbeque, beer tent and entertainment which will be provided by a Faversham-based Folk Group, Smack Alley. They are very well known in sailing/boating and barge circles and will perform for two one-hour slots.

Additionally, we have been very fortunate in obtaining the services of a local semi-professional theatre group, the Value Added Theatre. They are writing a comedy play specially for the occasion which will be based on the untimely eviction of a narrowboats permanent residential moorings. Robin Marshal of the VAT has asked that if anyone else wishes to have the play performed, he would be delighted to hear; his telephone number is Chelmsford 441208.

Of course, if you want to see the play before booking, why not come on Saturday 4 May—barbeque and entertainments are covered by the ticket price of £5. Give me a call on Southend-on-Sea 554492.

Yours very truly, D. A. Beard

121a Ditchling Rise
Brighton
Sussex BN1 4QP

Dear Sir,

Further to 'A little help for our friends?' in the August issue of *Windlass*, I agree with it all. I have, in fact 'crewed' on a few occasions myself. I was approached at the Boater's Weekend in Chester, 22-24 June, and offered a ride to Wolverhampton. Following on from this, I offered my services at the National Rally at Sutton Stop and had a busy four day trip to Stoke-on-Trent. During the latter I met a 'lone-boater' who was going to Stoke from

Leicester, and said that he could have used a bit of help. So there is a demand for 'crew', all it needs is a bit of co-ordination! To 'start the ball rolling', I am available for crew, subject to work. If anyone is interested in starting a register of available 'bods', they can write to me and we'll see what can be done.

Yours, Dafydd Jenkins

95 Fairlawn Drive
East Grinstead
Sussex RH19 1NS

Dear Uncle Ron

I enjoyed your Christmas Competition in the current issue of *Windlass*. My answers are:

1. 1800 on Saturday
2. 0600 to 0800 and 1710 to 2110

This answer is based on *The Shell Book of Inland Waterways*, page 286—'High Water at Brentford is one hour later than at London Bridge'.

Frank will miss Hanwell Top Lock by about eight minutes on Friday evening, and even if he enters the Top Lock as soon as it re-opens on Saturday morning, he will miss the morning opening of Brentford Locks by about three quarters of an hour. (I take Hanwell-Brentford to be three miles).

Poor Frank! The events of the day have taken their toll. He was planning a cruise *down* the Thames, But now he talks about a trip *up* the river. Let's take it that he stops motoring around in circles and settles on a cruise upstream. It is interesting to speculate how far he will get if he has to return to his mooring on Sunday evening. Say by 2100? He will have to return to the canal by 17.30, but, alas, the Brentford Locks will not open until about 18.50 on Saturday evening. So he will have to catch the morning tide, the latest possible time being about 1020.

I suggest that Frank moors up for Saturday night at Hampton Court, rises bright and early on Sunday morning for a little cruise up to, say, Sunbury, and then back to Brentford. He will have ample spare time once he gets back through Brentford. I recommend that he goes to a service at a nearby church, to calm down!

I reckon that Frank's Thames cruise will have totalled about six hours out of the fifty hours he is away from his moorings. But there's nothing like messing about in boats..... Yes, I'll come with you, Frank!

Yours sincerely, Derek Thorogood

NOTICE OF BRANCH AND REGION ANNUAL GENERAL MEETINGS

The AGMs will be held as follows.

REGIONAL AGM—8 MAY—Morris Radiator Sports Club, Frenchley Road, Oxford, 8pm.

CHELMSFORD AGM—14 MARCH—AUEW House, Primrose Hill, Chelmsford, 8pm.

OXFORD AGM—13 MARCH—Morris Radiators Sports Club, Frenchley Road, Oxford, 8pm.

KENT & E. SUSSEX AGM—26 MARCH—Hare and Hounds, Potter's Corner, Ashford, 8pm.

HERTFORDSHIRE AGM—19 MARCH—Hatfield CC, Welwyn Garden City, 8pm.

LONDON AGM—21 MARCH—University College, Gower Street, London, 7.30pm.

SOLENT & ARUN AGM—8 MARCH—Fernleigh Centre, Chichester, 7.30pm.

GUILDFORD & READING AGM—18 MARCH—British Telecom S & S.C., Leapale Lane, Guildford, 8pm.

AGENDA

1. Apologies for absence.
2. Minutes of the last AGM
3. Matters arising.
4. Chairman's Report.
5. Secretary's Report.
6. Treasurer's Report.
7. Adoption of Accounts.
8. Report of Sub-Committee Chairmen (if appropriate)
9. Election of Committee Members.
10. Appointment of Auditor.
11. Any other business.

Nominations for Committee Members should be in writing, signed by proposer, seconder and the nominee and **must** be received by the Secretary at least 14 days before the date of the appropriate meeting.

CONTINENTAL TRADING—There are canal boats and there are canal boats, as K&ES Branch member Annette Woods found out when she took up the offer made by Alan and Heather Mitchell to any branch members who wanted to visit the Dutch waterways with them. The Mitchells operate a 120 foot canal barge trading on the Dutch and Belgian canals and estuaries and Annette soon found herself signed on as crew. She proved to be such a good hand that when Heather (herself a master mariner) was taken ill before Christmas, Annette was flown back to Holland to resume shipboard duties. The Mitchells, who operate Quay Lane Wharf at Faversham, are UK agents for the very successful Pedro cruisers, and are owner of the Continental type coaster *Anton Held*. Visitors the Quay Lane Wharf would be well advised to pack a toothbrush and seaboots, first.

WENDOVER ARM—The Manpower Services Commission clearance scheme is continuing. It is hoped that part of the Arm can be re-watered but at present a report from BWB is awaited on whether they intend to re-water or merely renew the existing water pipes.

NORTH CIRCULAR ROAD AQUEDUCT—Proposed Closure—It had been intended to close the aqueduct for various, protracted sessions over a period of two years. However, thanks to the efforts of Ron Bingham and David Wood and protestations made by them it has been agreed that the aqueduct will only be closed for a single three week period.

NATIONAL RALLY NEWS—This year Milton Keynes. Moorings here are linear ones, so book early—unless you want to find you are berthed for the weekend $\frac{3}{4}$ mile inside the Blisworth Tunnel. The Hawkesbury Rally exceeded all expectations and has produced a record profit for IWA. The 1986 National Rally is to be held at Brentford.

KEEP LIVE THEATRE AFLOAT—Mike Lucas and Sarah Lucas write to tell us that Mikron Theatre will be kept afloat and they are determined to continue touring after the loss of the Art Council Grant. They have started an appeal fund to which they hope individuals, local authorities and regional arts council will subscribe. The Trent and Mersey Canal Society has agreed to sponsor a Mikron performance during their 1985 tour. It's a good idea—any branch or society willing to do the same would be helping to keep theatre alive on the 'cut'.

Letters to the Editor

'Shipwrights'
241 Benfleet Road
Benfleet, Essex

Dear Sir,

As many will have seen from the November *Windlass*, the Chelmsford Branch are holding a Rally of Boats on 4/5 May, 1985 at Kings Head Meadow, Chelmsford.

The Saturday evening has been reserved for IWA members and their guests; it will consist of a barbeque, beer tent and entertainment which will be provided by a Faversham-based Folk Group, Smack Alley. They are very well known in sailing/boating and barge circles and will perform for two one-hour slots.

Additionally, we have been very fortunate in obtaining the services of a local semi-professional theatre group, the Value Added Theatre. They are writing a comedy play specially for the occasion which will be based on the untimely eviction of a narrowboats permanent residential moorings. Robin Marshal of the VAT has asked that if anyone else wishes to have the play performed, he would be delighted to hear; his telephone number is Chelmsford 441208.

Of course, if you want to see the play before booking, why not come on Saturday 4 May—barbeque and entertainments are covered by the ticket price of £5. Give me a call on Southend-on-Sea 554492.

Yours very truly, D. A. Beard

121a Ditchling Rise
Brighton
Sussex BN1 4QP

Dear Sir,

Further to 'A little help for our friends?' in the August issue of *Windlass*, I agree with it all. I have, in fact 'crewed' on a few occasions myself. I was approached at the Boater's Weekend in Chester, 22-24 June, and offered a ride to Wolverhampton. Following on from this, I offered my services at the National Rally at Sutton Stop and had a busy four day trip to Stoke-on-Trent. During the latter I met a 'lone-boater' who was going to Stoke from

Leicester, and said that he could have used a bit of help. So there is a demand for 'crew', all it needs is a bit of co-ordination! To 'start the ball rolling', I am available for crew, subject to work. If anyone is interested in starting a register of available 'bods', they can write to me and we'll see what can be done.

Yours, Dafydd Jenkins

95 Fairlawn Drive
East Grinstead
Sussex RH19 1NS

Dear Uncle Ron

I enjoyed your Christmas Competition in the current issue of *Windlass*. My answers are:

1. 1800 on Saturday
2. 0600 to 0800 and 1710 to 2110

This answer is based on *The Shell Book of Inland Waterways*, page 286—'High Water at Brentford is one hour later than at London Bridge'.

Frank will miss Hanwell Top Lock by about eight minutes on Friday evening, and even if he enters the Top Lock as soon as it re-opens on Saturday morning, he will miss the morning opening of Brentford Locks by about three quarters of an hour. (I take Hanwell-Brentford to be three miles).

Poor Frank! The events of the day have taken their toll. He was planning a cruise *down* the Thames, But now he talks about a trip *up* the river. Let's take it that he stops motoring around in circles and settles on a cruise upstream. It is interesting to speculate how far he will get if he has to return to his mooring on Sunday evening. Say by 2100? He will have to return to the canal by 17.30, but, alas, the Brentford Locks will not open until about 18.50 on Saturday evening. So he will have to catch the morning tide, the latest possible time being about 1020.

I suggest that Frank moors up for Saturday night at Hampton Court, rises bright and early on Sunday morning for a little cruise up to, say, Sunbury, and then back to Brentford. He will have ample spare time once he gets back through Brentford. I recommend that he goes to a service at a nearby church, to calm down!

I reckon that Frank's Thames cruise will have totalled about six hours out of the fifty hours he is away from his moorings. But there's nothing like messing about in boats.....Yes, I'll come with you, Frank!

Yours sincerely, Derek Thorogood

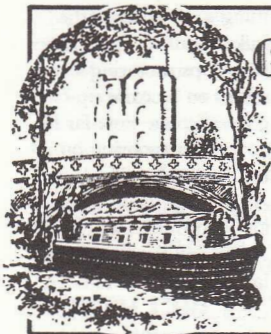
The Wey Ahead

*"The Wey & Arun Canal Restoration—Past, Present & Future"** is a 66 page discussion document on the project, prepared by Trust Council member Bill Thomson. In the first fifteen years if its existence the Trust has progressed from the stage of a 'totally impossible' project to one which is 'perfectly feasible', never-the-less, it will be another fifteen years before the Trust is able to report that the end is in sight. The document explains that what the trust is doing is making sensible use of an abandoned waterway which still largely holds water. On completion it believes the project will have a valuable part to play in the nation's leisure system, assessed on the basis of British Waterways' 'per mile' figures as being capable of generating a revenue of over half a million pounds on 1984 prices, as well as providing some 200 new jobs for the locality. What distinguishes this restoration project from others is that unlike most abandoned canals which remain in a single ownership, over forty private individuals own the bed of this canal.

This document surveys the work which has been completed and details what has to be done, raising the question of alternatives to the first two and a half miles of the canal through Surrey which are subject to new low bridges and in some cases the gardens of houses. The report recommends the setting up of a restoration liaison committee to include authorities, clubs and associations and owners of the canal. As the canal is being restored as a public amenity the report advises consideration be given to establishing a public trip boat and a permanent interpretation centre to show the benefits and the uses of the canal. It feels priority should be given to establishing a footpath along the length of the canal and to putting restored sections of the canal to use, particularly for canoeing and angling.

Following a visit to the canal by IWA National Chairman, Ken Goodwin, a positive suggestion has been made on the question of overcoming the problems of the canal's multiple ownership to the satisfaction of both the Trust and the owners. IWA is looking into the viability of the proposal.

*Copies of the report are available from John Wood, 24 Griffiths Avenue, Lancing, West Sussex BN15 0HW, price £2.50 including post and packing.



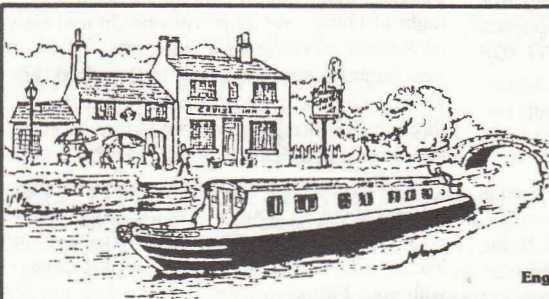
GUILDFORD BOAT HOUSE

BOAT ACTIVITIES ON THE RIVER WEY

- Cruising restaurant 'Alfred Leroy' • River trips
- Self drive holiday narrow boats • Educational cruises for schools
- Rowing boats and canoes for daily and hourly hire

For full details of all our services apply:

Millbrook, Guildford. Telephone 504494



FOR YOUR 1985 Inland Cruising Holiday, Start from this 18th Century Inland Port for CIRCULAR and 2-week Cruises on the:

Staffordshire & Worcestershire Canal River Severn
Worcestershire & Birmingham Canal River Avon
Shropshire Union & Llangollen Canals B.C.N.
Trent & Mersey Canal

- MODERN 2 to 12-berth narrowboats
 - LICENSED for Severn, Avon and BWB Canals
 - KEEN fully-inclusive prices—no hidden extras
- HELPFUL, FRIENDLY service
RING NOW or write for FREE Colour Brochure

STROUDWATER CRUISERS
The Narrowboat Specialists,

Engine Lane, Stourport on Severn, Worcestershire

Boatyard Stourport (02993) 77222. Home Malvern (06845) 68133

BRANCH NEWS AND NOTES

KENT AND EAST SUSSEX BRANCH—*Report by John Morgan*

Chairman: Ian Dempster, 16 Dixwell Close, Gillingham, Kent. Telephone: 0634 35627

Secretary: John Morgan, 49 Hillbrow Road, Ashford, Kent. Telephone: 27594

BRANCH NOTES—In spite of what was said in the last issue of *Windlass*, when the Branch suddenly found itself without a speaker because of the unavailability of the National Chairman, it was John Gagg who came to our rescue at the very last minute to give us a splendid slideshow at the Old Palace, Maidstone on 9 November. Our grateful thanks to you, John; we were delighted that you could entertain us. The meeting was attended by a number of foreigners from London branch—they didn't recognise Abingdon, either. John showed us his excellent slides on the Middle Level, part of which is an endangered waterway.

We say au-revoir to two of our stalwart Committee members, Bryn and Doris Weightman, who are on the move to Leicestershire. Doris' fund raising activities have been a great boost to the Branch. The Branch raises money for the Handicapped Boat Trip which we organise each year. Doris' contribution was to hold a Craft Fair at Gillingham on 17 November which was opened by Radio Kent personality John Thurston. There were fourteen stalls and the Fair raised £57.75. Over £200 has now been collected for the outing.

Starting from February, monthly Committee meetings will be held at the 'Brickmakers Arms', Perryfield, Maidstone on the second Tuesday in each month. We hope to show members slides after the meetings.

MEETINGS AND EVENTS

19 FEBRUARY. White Hart, Orpington. Talk by Tony Fletcher on the Economics of Canals.

26 MARCH. Tuesday. AGM, Hare and Hounds on the corner of Sandyhurst lane, two miles out of Ashford. Wally Norris, our Sponsored Walk Organiser will give an illustrated talk on the Royal Military Canal.

27 APRIL. Saturday. Annual Dinner aboard the *Rochester Queen* floating restaurant, the Esplanade, Rochester, 8 for 8.30pm. All-in price of £9.50 a head. Bookings: Branch Chairman.

15 MAY. Illustrated talk on the Montgomery Canal by National Chairman, Ken Goodwin. Venue at Tonbridge.

2 JUNE. River Rother Rover, cruise from Rye to Bodiam Castle. Stalls, etc, at Bodiam. Tide 1100 at Scott's Float Sluice.

9 JUNE. Sunday. IWALK. Details available from Branch co-ordinator, Wally Norris, 23 Castle Road, Hythe, Kent.

LONDON BRANCH—*Report by Farrand Radley*

Chairman: A. Farrand Radley, 157 Holland Park Avenue., London W11 4UX. Telephone: 01-603 6062

Secretary: Ron Bingham, 9 Exeter Road, Welling, Kent. Telephone: 01-855 3693

MEETINGS AND EVENTS

These are held in University College, in the Old Refectory, Gower Street, London WC1, (nearest Tube is Warren Street or Goodge Street). During building works the entrance and car park is in Malet Place.

24 FEBRUARY. Thursday, 7.30pm. THE OTHER SIDE OF THE TIDE LOCK (Commercial Shipping in the 18th century)—Hugh Perks

21 MARCH. Thursday, 7.30pm. AGM, plus Any Questions to the National Chairman, Kenneth Goodwin.

18 APRIL. Thursday, 7.30pm. UPDATE ON THE WAY AND ARUN—Peter Beresford.

16 MAY. Thursday, 7.30pm. THE BASINGSTOKE—Robins Higgs, Chairman Surrey and Hants Canal Society.

National Waterways Summer Events

21 APRIL. The London Marathon—we have entered Malcolm Bates and two others and sponsorship is welcomed.

4-5 MAY. Westminster 400—the Rally Chairman is Mike Evans and the Pageant Master Malcolm Bates. The event is in conjunction with the Westminster City Council's celebration of the Act of 1585 establishing the Court of Burgesses, the first local government in London. There will be a Cavalcade of Boats on the Saturday 4 May and all manner of events on both days. The organisers of the Cup Final and the London Marathon have consented not to arrange their events on this day, so that maximum participation is invited and volunteers for help are welcomed. The Lord Mayor of the City of Westminster, the Chairman of BWB, the National Chairman IWA, and the Chairman of the GLC will be on parade.

1-2 JUNE. Thames Barge Sailing Club Rally at Greenwich—This colourful event will be repeated with the whole Canaletto atmosphere.

8-9 JUNE. IWALK—A sponsored walk from Rickmansworth to Little Venice—the big opportunity to raise funds and prove your fitness.

HERTFORDSHIRE BRANCH—*Report by Beryl and Barry Martin*

Chairman: Ian Thonger, 3 Pendennis Court, Harpenden. Telephone: 68816

Secretary: Mrs Julie Hatfull, 32 Field Way, Hoddesden. Telephone: 466928

Christmas Social—Around sixty branch members joined together to enjoy our Christmas social evening, which included a 'Best Fifteen Colour Slide' competition. The range of subject matter offered by the fifteen entrants covered most of the canal and river system of the British Isles, together with French, Dutch, Belgian, Venetian and Indian waterways. Martin Wood, Chairman of the Grand Union Canal Society, as competition judge, was faced with a very difficult task deciding on the following winners: Best set of 15 slides—Ian Fletcher; Best individual slide—Mrs J. Barnaby; Runner-up individual slide—Jonathan Wilkins. Thanks were expressed to Julie Hatfull who organised the refreshments and thereby helped to make the evening a great success.

The **1985 Branch Outing** will be to the Ironbridge Gorge Museum complex—birthplace of the Industrial Revolution, visiting Blist's Hill Open Air Museum with its reconstructed Victorian town, the Coalport China Works, the Canal and Inclined Plane and the Iron Bridge. Visit takes place on Sunday 23 June, by coach at a cost of £6.50 each (£1 reduction for pensioners) which includes the fare and entry to the museums. Pick-up points at Hatfield and St. Albans. Bookings from Phil Orton, 1 Bembridge Place, Linden Lea, Leavesden, Watford. Tel: 0923 670267. We look forward to seeing you there.

We extend to all Branch members and all readers of *Windlass* Season's greetings and very best wishes for a happy and active New Year of endeavour in promoting the waterways.

BRANCH MEETINGS—held at the Hatfield Cricket Club, Ascots Lane, Welwyn Garden City (near the Queen Elizabeth II hospital) at 8pm.

21 FEBRUARY Tuesday. NATURAL HISTORY OF AN OLD CANAL—Talk by Brian Barton and Clive Banks.

19 MARCH. Tuesday. AGM. An opportunity to meet National Chairman Ken Goodwin.

10 APRIL. Wednesday. Joint meeting with GUCS at Rickmansworth Hockey Club, Scots Hill, Rickmansworth (A412).

16 APRIL. Thursday. HOW WE DID IT—Robin Garrett of BWB.

21 MAY. Tuesday. THE WORK OF THE WATERWAY RECOVERY GROUP—Jeremy Frankel.

8-9 JUNE. Saturday and Sunday. IWALK 85—Sponsored walk along the Wendover Arm.

18 JUNE. Tuesday. THAMES TOPICS—John Humphries.

22-23 JUNE. Saturday and Sunday. Branch Outing.

GUILDFORD AND READING BRANCH—*Report by Colin Ward*

Chairman: Geoff Bailey, 40 Hazell Road, Farnham, Surrey, Telephone: 724811

Secretary: Brian Percy, 21 New Road, Marlow Bottom, Bucks. Telephone: Marlow 4575

BRANCH NOTES—We are pleased to say our Christmas get-together was very well attended, and enjoyed by all present. I do hope we got round to say hello to you all; it was good to see some new faces. On the River Thames front we are pleased to say that Thames Water listened to our representations over the planned 5-month closure of Chertsey Lock, and the the lock was re-opened for traffic for three weeks at Christmas and New Year. During the coming year it is possible there may be staffing difficulties at Locks and should anyone encounter problems—for example with hours of lock openings—we would be pleased to hear about them.

NATIONAL WATERWAYS SUMMER—We have three events planned.

GUILDFORD WATER FESTIVAL. 6-7 July. A major boat rally (souvenir plaque, of course), trade show, arena events and hopefully Mikron Theatre. All the best features of the memorable Godalming event in 1981. 16 day boat licences available. Boat entries, contact Pat Perry-Barton, Segren, Grove Road, Hindhead GU26 6HP (SAE please). Trade entries, Norma Whittaker, 11 Dynevor Place, Fairlands, Guildford GU3 3JL. Entry fee £8 per boat and £4 per canoe/dinghy. £1 reduction if booked before 30 April.

SMALL BOAT CRUISE. Sunday 2 June. River Wey. All small boats, dinghies and canoes are welcome to join us in exploring some of the lesser-used parts of the river near Newark. No entry fee. Details from Tony Davis on Weybridge 44261.

IWALK. As this date clashes with the boat rally on the Basingstoke Canal, we hope to join our friends in the Surrey and Hants Canal Society to hold a joint IWALK/SHCS event on Sunday 19 May. Further details from Tony Davis.

RIVER WEY—Ulick Palmer reports good response to request for information as a result of our recent appeals. Our file on the use of the backwaters of the Wey has swollen visibly. The results were of great value when TWA questioned the right of access to Old Woking, where one of our members moors a boat against her land. As a result TWA has now agreed that the Wey Navigation Act 1671 still holds and rights of navigation exist on the backwaters. At the same time, we were approached by Woking Council who wish to acquire the site of Henry VIII's Palace on the same backwater, and to open it to the public with boating, picnicing and angling facilities. We were able to reassure them also that navigation rights exist.

The new paddle gear on the Wey seems to meet with favour, not without a few teething troubles. A number of modifications will have to be made before it goes into production; these will prevent the rack being wound out of the bottom of the gearing and protect the mechanism from being over-stressed should it be wound in the wrong direction.

We have heard reports of rather variable hours of evening closures at Thames Lock, Weybridge and we are discussing these and other matters with the National Trust (owners of the Wey).

A report of our latest meeting is available from Ulick at Wychwood, The Ridgeway, Cranleigh. Find out what is happening on your river; tell your non-member friends that it is IWA which is representing their interests and SIGN 'EM UP. That goes for River Thames users as well. But thanks for your response. It is good to know you support our efforts to protect and improve our waterways for all users.

BRANCH MEMBERSHIP RECORDS—We have now computerised our records. Will EVERY Branch members please fill in the attached form (photocopy please, don't destroy *Windlass*) to ensure our records are correct. The cost of a letter and a stamp is worthwhile to have your IWA mail correctly addressed and it will improve our contact with members.

To: Ulick Palmer, Wychwood, The Ridgeway, Cranleigh, Surrey GU6 7HR

BLOCK CAPITALS

Surname

Initial or First Name

Mr/Mrs/Miss/Mr & Mrs

Address

(With postcode, please, as we can use it to pick out members who live in a particular area)

Membership number (from the Windlass label)

Occupation/Helpful skill or trade

CHELMSFORD BRANCH—*Report by John Gale*

Chairman: Mrs Betty Adams, 214 Broomfield Road, Chelmsford. Telephone: 354857

Secretary: David Johnson, 12 Queen's Road, Chelmsford. Telephone: 353637.

CHELMSFORD IWALK. Sunday 9 June, walking from Chelmsford to Heybridge along the Chelmer and Blackwater Navigation. Starts 10am from King's Head Meadow car park and finishes at Heybridge Basin car park.

RALLY OF BOATS. Kings Meadow Chelmsford 4 and 5 May. Cruise from Heybridge Basin to Chelmsford. Entry Fee £5 for IWA members, plus fixed toll to be paid at Papermill Lock. Maximum dimensions of craft 60' x 16' x 2'6"; headroom 6'5".

OPEN DAY. Sunday 26 May. Branch Open Day at Little Hallingbury Mill.

BRANCH MEETINGS

All meetings are held at the AEUW House, Primrose Hill, Chelmsford, at 7.45 for 8pm sharp

14 FEBRUARY. Thursday. BLISWORTH TUNNEL RESTORATION—Talk by Martin Japes of BWB.

14 MARCH. Thursday. AGM and members slides.

11 APRIL. Thursday. THE WORK OF THE ESSEX NATURALISTS—Talk by G. A. Pyman.

9 MAY. Thursday. FILMS—'Gone to the Movies—a Waterways film evening.'

OXFORD AND SOUTH BUCKS BRANCH—*Report by Morvyn Phillips*

Chairman: J. Wheatland-Clinch, 38 Howard Road, Newbury.

Secretary: Mrs Pam Pugh, 10 Vanner Road, Whitney, Oxon. Telephone: Whitney 71138

BRANCH REPORT—A very enjoyable Branch party was the theme of the last meeting of the branch for 1984, where all sections of the branch were represented. It is therefore sad to record that, those who meet at the Crown Hotel in Amersham each month are recording a membership attendance of only six of seven people—in fact, only the committee appear to be present! This very discouraging situation cannot be perpetuated as it is obviously damaging to morale, bad for speakers and very unhealthy in financial terms. Indeed, the branch committee will have to look very carefully at the S. Bucks section within the rest of the IWA year and if support is not improved then the demise of that section will be imminent. PLEASE, PLEASE will all members who live in the Amersham, High Wycombe area rally round and support their section by attending their meetings. Should any member have any reason why attendance is poor, please let me know on 0235 831369, evenings.

On a more cheerful note, work has commenced on clearing the overhanging trees and tidying the towpaths at the Hythe Bridge Arm. This is being done in conjunction with the Oxford City Council and BWB, and is a direct result of our 'Token Ton' activities last summer. By the way, the Hythe Bridge Arm is the very end bit of the Oxford Canal past Louth (or Isia) Lock to the terminus in Oxford. When this work has been completed it will be maintained by the branch who will also 'manage' the stretch, which will make a most attractive temporary mooring spot in the heart of Oxford.

Many of the Branch Committee members are heavily engaged in making the First National Trail Boat Rally a success. Please assist them by contacting John Clinch, our Branch Chairman, with offers of help.

BRANCH MEETINGS—Monthly meetings are held at the Morris Radiators Sports Club, Frenchley Road, Oxford at 8pm and at the Crown Hotel, Amersham.

13 MARCH. Wednesday. Branch AGM. Morris Radiators Sports Club.

25-27 MAY. Saturday-Monday. National Trail Boat Rally, Pewsey Wharf, K & A.

8-9 JUNE. IWALK. Contact Branch co-ordinators Mr and Mrs R. Powell, 116 Cressex Road, High Wycombe.

SOLENT AND ARUN BRANCH

Chairman: Alan White, Wheel House, Pottery Lane, Nutbourne, Chichester. Telephone: Bosham 573765

Secretary: Mrs Linda Peirce, 46 Hillcrest Drive, Ashington, Pulborough. Telephone: 0903-892254

Waterways Summer 1985-Programme of Events

17 APRIL. Public meeting at Horsham. Holy Trinity Church Hall, Rushams Road, Horsham, 7.30pm. Films to include 'A Slip up the Arun' and 'S & A Waterways Fortnight 1983. Contact Ray Peirce, Ashington 892254.

12 MAY. Small Boat Sponsored Cruise (7 miles). Assemble at Waters Edge Hotel, Pulborough, to depart at 0945. Sponsor forms from Gerry Skinner, Tel: Worthing 203514.

9 JUNE. Wey and Arun Canal Trust Sponsored Walk. Depart from Petworth 9 to 10am. Sponsor forms from John Wood, Tel: Lancing 753099.

16 JUNE. River Adur Pleasure Cruise (22 miles). Assemble Ropetackle Slipway, Shoreham, to depart at 9am. Contact Gerry Skinner.

13 JULY. Portsmouth and Arundel Canal Society Beer Barrell Races, Chichester Basin, 2pm. Teams of four from any club, pub, firm or society welcome. Entry forms from John Cooper, Bracklesham Bay 671051.

14 JULY. P&ACS Canoe Fun Day. Chichester Basin 9am. All clubs and individuals welcome. Contact Linda Wilkinson, Tel: Chichester 788288.

20-21 JULY. Arun Waterside Fair, next to Castle Car Park, Arundel.

At a date to be arranged the P&ACS will be holding a Competition on the Chichester Canal.

Throughout the season the Solent and Arun Special Sales Stand will attend at the various venues.

HACKNEY'S CANAL—Is the title of an exhibition showing the rescue of the Regent's Canal through Hackney as seen by children in four local schools. Their drawings, photographs and writings show the opening of the towpath to the public, the bringing back into use of Kingsland, Laburnham and Wenlock Basins and express what they would like to see for future development. The exhibition has been put together by Marcia Thompson assisted by CHUG (Canals in Hackney Users Group) and the Hackney Teachers' Centre (funded by the GLC under the Canalway Project). It's a super idea because it involves children in our waterways and some of the drawings are really lovely.

The exhibition is open until 11 March at Goldsmith Row Library E2; and from 13 March to 2 April at Parkside Library, Victoria Road, E9. Further details from Marcia Thompson at 8 Witherington Road, London N5. Telephone: 01-609 1864.



Schoolchildren from Holt Trinity JMI School investigating the Hackney Workforce boat Opportunity.
Photo—Richard Totallian

WATERWAYS RECOVERY GROUP—Report by Bob Keaveney

London WRG organises 'digs' every three weeks throughout the year. We concentrate on the Wey and Arun and Basingstoke Canals but also work on the Droitwich, River Avon and at the Ironbridge Gorge Museum. New members are always welcome. Transport is available from Central London if required. Please contact us for further information: either myself on 01-771 2536, or Jeremy Frankel on 01-958 7709.

Our Spring programme is: **2/7 March.** 'Stratford Blitz'—the first of four visits to carry out much needed repair work on the Southern Stratford. **23/24 March.** Basingstoke Canal. **13/14 April.** Wey and Arun Canal. **4/5/6 May.** Our first ever visit to the Huddersfield Narrow Canal. **25/26/27 May.** Wey and Arun Canal.

Surrey and Hants Canal Society

Following the successful 1984 small boat rally on the Basingstoke Canal, the Surrey and Hampshire Canal Society are planning to hold another in 1985.

Although basically similar, they hope to expand the shore based entertainments and make it more suitable for attracting a wider public, which in turn will make the navigable section and the remaining restoration task better known to the population.

Owners of trailable boats up to 26' are once again invited to apply for an application form to attend this event, which will be based at Ash Lock near Aldershot. It is hoped that the water problems to the East of the site will be resolved by the time the event takes place, so some new cruising ground may be available.

Parking, as usual, will limit the number of cars and trailers that can be accommodated over the weekend, so early application is recommended.

Special licences will be available for those members who do not already hold a licence. No entry fee is required but the organisers hope that everyone attending will purchase the special brass plaque that is being cast to commemorate the event.

The SHCS trip boat *John Pinkerton* will be in attendance but it is also hoped that members will help with short trips to give people a 'boaters eye' view of the canal.

A barbecue and entertainment for SHCS members and boat crews on Saturday night is planned.

The weekend of 8/9 June is the date for your diary, but boats can also be slipped anytime on 7 June as well.

Please contact Vic Trott, 21 Lime Grove, Westfield, Woking, Surrey GU22 9PW for application form and full details, (SAE please).

Wey and Arun Canal Trust—Report by Sally Thomson

Work is progressing on Lock 17 and with the assistance of K&ES Canal Restoration Group some 7000 engineering bricks have been rescued from a redundant ladies loo with which to finish off the brickwork to Lock 17 (*I wonder what they're going to call the lock when it's complete*). Community Programme work continues at Toat Farm on the new bridge and adjacent overflow weir and the abutments are about ready to receive the steel and timber decking. The Trust's 3rd Work Camp is to be held in wonderful Sussex from 31 August to 15 September, cost about £2.50 a day, which is better value than Torremolinos. Full details from Neil Edwards, 79 Baldwins Lane, Croxley Green, Rickmansworth WD3 3LT. Our sponsored walk on 9 June as part of IWALK starts and finishes at Petworth Park by kind permission of our President the Rt. Hon. Lord Egremont. Full details of our 'Petworth Poodle' from Joanne Rorison, Flat 3, 11 Powis Road, Brighton, East Sussex. Telephone: 724861.

Lee and Stort Report—by Beryl and Barry Martin

A public meeting is to be organised early in the year on the proposal to form a 'Lee and Stort River Society' to further the aims of the Development Committee by creating a forum for those interested in the rivers. Contact Mrs J. Wilkinson, Hallingbury Mill, Gaston Green, Bishops Stortford, for further details.

The Lee and Stort Development Committee held the first presentation of its annual awards on 13 November. The Award Scheme is to encourage positive action to improve the amenity of the rivers. Under the Chairmanship of Mrs Hayes-Allen, Colonel R. W. C. Charlton, OBE, Deputy Lord Lieutenant of Essex presented the Local Authority Award to Lee Valley Regional Park, for improving the Broxbourne picnic site (including overnight moorings); the Commercial Award went to the Lee Valley Narrowboat Co., who have made improvements to the Maltings at Ware and the Widewater moorings; the Community Award went to the Ware Society for renovation of the delightful waterside Gazebos; and the individual award was made to Mr and Mrs Cooper of Roydon Lock House for general improvements to the lock area and surrounds. Numerous certificates of merit were presented.

THAT WHEELHOUSE STORY

By Reg Hallwood (former K&ES Branch Chairman)

Once upon a time, a 40ft canal cruiser, narrow boat type, was fitted out at Conyer Creek in the Swale. She was name *Serenity* and her maiden voyage was out beyond Fowley Island to the number three buoy, complete with a borrowed anchor and chart. Enthralled—and scared—by such a vast expanse of water, subsequent years found her at Tonbridge, Maidstone, Strood, Gillingham, Queenborough, Milton Creek, Oare Creek and many more delightful spots on the Medway cruising grounds.



Narrowboat, oyster smacks, Thames barges, a Humber Keel and historic powercraft at the 1979 Swale Match.

It was found that in the more tumultuous waters of the estuary, she tended to roll somewhat. After much discussion with a barge skipper, a yacht surveyor, a naval architect and many others who all knew what they were talking about, it was decided to; a) cut the boat in two and lengthen it by 6ft., b) weld on bilge keels to help stabilize her, c) fit a bulwark round her stern to improve the after freeboard, and d.) fit a wheelhouse over the new extension to improve her weather keeping qualities.

Due to the owner's cash flow problems, only a) b) and c) were completed that year, and in this incompleated state, *Serenity* attended the Swale Barge Match of 1979 in the 'Traditional Powered Craft' classification. It is left to the reader's imagination to see how *Serenity* fitted this classification.

The bilge keels definitely damped the roll considerable and the bulwarks gave an added sense of security, although the additional freeboard seemed quite unnecessary. The extra space provided by the extension was a bit of a nuisance at this stage, forming an awkward 'hold' between the steering position and the cabin. However, the following winter the wheelhouse was constructed and fitted by a retired welder who was a craftsman 'par excellence'.

In the summer, *Serenity* cruised the Swale, attending the barge races as usual. The only trouble was, that although the wheelhouse gave invaluable space for all sorts of junk, the wheel still had to be fitted. Now, four years later, the wheel still has to be fitted. It is certain that when completed, cruising in foul weather will be possible without getting wet or cold. (Modern man is not made of the stern fabric which enhanced his forefathers.)

The *Serenity* forsook the Medway for the shallow waters of the Midland and Northern canals, travelling for three years up the Grand Union, the Oxford, the Rivers Soar and Trent, across the Pennines by way of Aire and Calder, Leeds and Liverpool, and thence down the Trent and Mersey, the Coventry, the Oxford and back to the Grand Union at Blisworth. The bilge keels which did so much to make the boat seaworthy as possible on the Medway, have been an absolute curse on the canals. Trying to moor up to the normal canal bank increases the distance from the bank by the square on the hypotenuse—if you'll excuse the expression! Going aground in the middle of the canal, which is a frequent delight, requires enormous outbursts of energy, as she cannot now slide off the mud sideways. The bilge keels dig in and keep her straight so she has to be poled off sternwise.

The wheelhouse, which gives stowage for a workbench, washing machine, tumbler drier, the loose wheel, junk and lots of headroom, also gives the Skipper and Crew heart failure at nearly every bridge on the system and in every tunnel. In fact, Harecastle proved positively 'hair-raising'! *Serenity* went aground on the silt at the very entrance to the tunnel, and was then offered a tow through. Instead of deciding immediately to turn round and go back over the Pennines, the tow was accepted. Now, Harecastle has some very interesting projections, both at water level and in the roof. It was one of these that caught the leading edge of the wheelhouse, and with a great splintering of glass, timber and metal, nearly tore the structure off the boat. In the awful gloom, relieved only by the reflected lights of the convoy, the damage could only be imagined. The towing boat was unaware that her tow was sheering about all over the tunnel. Then, somewhere in the middle, we went aground again.

Now that Blisworth Tunnel is again open, we hope lots of 'tunnellers' will be very happy in there. But we are heading back to the Medway (possibly taking in the Staffs and Worcs., and the Shroppe), then via the Thames.

Portsmouth and Arundel Canal Society Annual Charity Beer Barrel Race

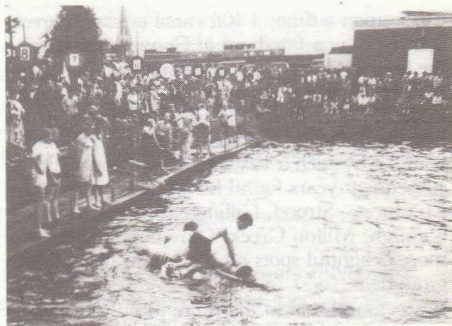
Report by Gerry Skinner

On a brilliant tropical day, 14 July, the Third Annual Beer Barrel Races, held at Chichester Basin, proved to be an increasing success.

With 77 teams competing (20 more than last year) from local firms, pubs, clubs and societies, together with eight teams from different R.N. establishments at Portsmouth, nine heats were held before the deciding final, which this year was won by 'What for of Wittering' who received £100 in cash plus eighteen gallons of beer, the latter kindly donated by the local brewery. As well as second and third prizes, one was also given for the best team attending in fancy dress.

The result of the wonderful efforts of the organisers, sponsors, competitors and the attending public, was that the P.&A.C.S. was able to benefit by over £1250 towards their restoration fund. For the benefit of other Societies who may not as yet considered local sponsorship for any of their events, an interesting comment was made, during the heats, by a local builder who had sponsored his own firm's team—'Whether we win or lose doesn't matter. The important thing is that there are 3000 people round that Basin and I have heard my firm's name mentioned over those loudspeakers five times already!.

Surely a lesson to be learned from this. Who say advertising does not pay?



*Competitors in Chichester Canal Basin, unsure as to whether they are supposed to be on top or under the beer barrels.
Photo—Gerry Skinner*

Boats for Sale

HALF SHARE in family owned converted 71 foot Butty, Lister SR3 engine. £4000 ono. Fully equipped. Telephone: 04032 42102.

FOR SALE. A. C. MacDonald's 'XIFF XAFF' 28' x 6'6". 2-berths; Thornycroft 'Handy Billy'. Cup winner 1958. Unmodernised. Apply 8 King Street, Emsworth, Hants PO10 7AZ.

HALF SHARE IN A BUTTY—

David Litchfield, whose advertisement for a half share in an ex-BWB butty appears in this issue, has kindly offered a donation to IWA if the ad is successful. A great offer from David who is celebrating 25 years as a member of IWA. In your rush to buy the half share in this boat PLEASE don't forget to mention *Windlass*.

NORMAN 24—1982 Cabin Cruiser with hardtop and canopy. Yamaha 30hp outboard electric start motor. 4 berth, luxuriously upholstered. Toilet, shower, water heater and cooker. Mooring available at Pyrford Marina, River Wey. Ropes, fenders, Calor gas bottle, windlass and boat hook included in sale. Owner in hospital most of 1984 season and must sell prior to commencement of new season.

£7250 ono. Telephone: 042 15 4408 for further details.

Brentford Dock Marina

Welcomes Canal Narrowboats and Cruisers

- ★ **MOORINGS** In our quiet Marina at the entrance to the Grand Union Canal. 20% discount for narrowboats over 30ft.

- ★ **SELLING** We urgently require good quality narrowboats and cruisers for our Brokerage Clients. We offer 3 months free mooring and 8% + VAT commission to selected craft.

- ★ **BUYING** With any boat sold with this advertisement we offer:
 - Free tuition to beginners
 - Guaranteed mooring in Brentford Dock Marina
 - Insurance and finance can be arranged
 - Selection of canal craft always for sale



Brentford Marine Sales Ltd

Augustus Close
Brentford Dock Marina
Brentford, Middlesex TW8 8QA
(Off Brentford High Street—by Six Bells P.H.)
Telephone: 01-568 0287

*(Open 7 days a
week—10am-6pm)*